



Hanzo **Illuminate**

Dynamic data management. Reimagined.

Transform collaboration data from chaos to clarity

Explore the benefits of a pioneering dynamic data management and eDiscovery solution that gives your business the edge.

With Hanzo Illuminate, you can quickly and easily create and manage in place preservations, collect, investigate, cull, and export dynamic collaboration data – in an optimally efficient and reliably defensible way.

Opt to switch on Spotlight AI for powerful, next-level capabilities that revolutionize your data analysis.

Spotlight AI makes eDiscovery faster, smarter, and simply better

Take full advantage of AI-powered eDiscovery that revolutionizes data analysis and transforms the way you work, for good. An optional switch-on element within Hanzo Illuminate, our cutting-edge Spotlight AI is an automated relevancy engine that helps you and your teams navigate vast datasets with precision, depth, and clarity – for faster, smarter, better informed decision-making at every step.

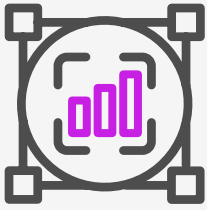
Contextual understanding and clarity on relevance decisions

Spotlight AI transcends traditional keyword-based search to understand the underlying context of data. This enables users to gain deeper insights into relevant data and rapidly identify patterns and connections that remain invisible using traditional search methods. It also helps you and your teams understand the ‘why’ behind data relevance decisions – so you can appreciate the significance of any content, ensuring it aligns with your search intent. Our next-level technology provides transparency into data relevance decisions with clear, concise explanations that contribute to each decision.

Get insights within hours, not weeks, with efficient analysis

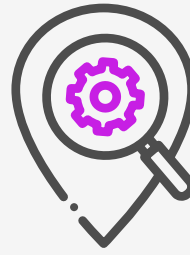
Spotlight AI efficiently processes and analyzes large collaborative datasets, rapidly identifying and elevating the most relevant and important content to the top of your review – even across hard-to-navigate collaborations apps. This enables you and your teams to quickly and easily gain insights from complex and dynamic datasets, without having to manually sift through large volumes of data. Users can also refine their understanding of data through natural language input, meaning that they don't require complex training to tap into the power of AI-driven data analysis.

Benefits



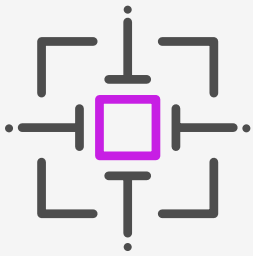
End-to-end data capture, intelligence and protection

From start to finish, Hanzo's advanced technology and expert support helps you defensibly capture collaboration data, rapidly understand the relevancy of any given information to a matter, limit data volumes, and identify risky content within your enterprise – to optimize your operations and protect your business in the best possible way.



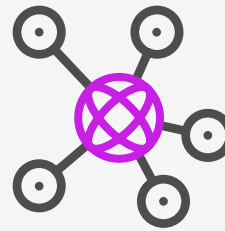
Preserve and collect data everywhere work is done

The average enterprise uses nearly 300 separate SaaS apps across its operations, with the average employee accessing 10 different apps to collaborate and communicate daily. Hanzo Illuminate defensibly preserves and collects enterprise data wherever work gets done – including across hard-to-navigate collaboration apps like Slack, Google, Microsoft Teams, Atlassian, cloud-based SaaS apps, and internal systems.



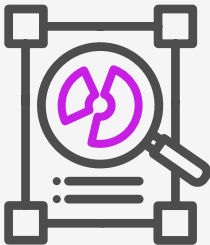
Collect exactly what you need and nothing more

Precisely control eDiscovery processes and respond effortlessly to eDiscovery and audit requests, internal investigations, or HR-related matters. Hanzo Illuminate gives you and your legal teams easy access to robust search, AI-powered data visualizations, and intelligence, so you can quickly uncover the data insights you need and produce relevant information in ready-to-go formats.



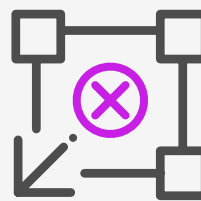
Scope + Preserve with Dynamic Mapping

Our Dynamic Mapping technology allows you and your teams to manage the precise preservation of data. Our intuitive and easy-to-use interface puts you in complete control of your legal hold matters.



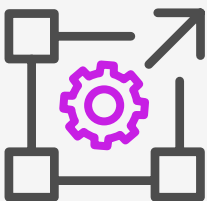
Easy Audit and Early Case Assessment

Hanzo Illuminate gives you complete visibility within matters and provides necessary auditing and reporting information everywhere. Meanwhile, advanced text and metadata search enables you to conduct rapid analysis and early case assessment (ECA) of preserved data. You can narrow search results and visualize hot spots to quickly gain insights to determine relevance.



Tag + Cull to better control data volumes

You can use built-in functionality within Hanzo Illuminate to easily tag responsive data for export and/or further review and to cull irrelevant information. This significantly reduces the volume of data that you need to send out for costly review.



Report + Export for easy review

Now you can easily report on key metadata, channel, and custodian information. Efficiently package and move data directly from Hanzo Illuminate into the review platform of your choice, to share with your legal or internal investigation teams.



Gain peace of mind with secure data archiving

With enterprise-grade controls, Hanzo solutions are SOC2 Type 2 certified and architected to be secure from the ground up. Extend controlled access to users and teams as well as third parties.



Why choose Hanzo Illuminate?

AI-powered data insights and rapid risk mitigation

Spotlight, an Illuminate add-on, combines Hanzo's proprietary AI with IBM's watsonx.ai to identify and categorize message content containing PII, PCI, access credentials, trade secrets, and toxic language. Understanding collaborative message content allows you to rapidly locate sensitive information and uncover unwanted workplace behavior, while categorizing non-linear channel conversations for quick intelligence. You can visualize content by heatmap and channel specifics, or via other AI-driven categorization models.

Complete picture of collaboration data

Hanzo Illuminate defensibly preserves and collects digital communications across hard-to-navigate collaboration apps – such as Slack, Microsoft Teams, Google Workspace, Jira/Confluence, Asana, and other SaaS platforms and internal systems – while maintaining the conversation context, including attachments, emoji, and metadata.

Contact us
today

Sales
contact@hanzo.co

Customer Support
support@hanzo.co

Dynamic Mapping of Slack ecosystem

Previewing the structure of your Slack ecosystem with our Dynamic Mapping technology makes it easy to target the data you want, eliminating unnecessary collections by up to 85%. Powerful search and data visualization tools help you narrow relevant datasets based on key metadata or file content for export and review.

Single-point data management of Google Workspace, Slack, and Teams

Hanzo Illuminate allows you to easily create and release legal holds in Slack, Microsoft Teams, or Google Workspace without collecting a single file. It removes bottlenecks between IT, Legal, and Investigations teams with easy data access. Users trigger collections only when required, helping reduce data collection and storage required.

Future-proofed API + data collection approach

APIs are a valuable way of connecting with data sources. However, with the rapid pace of new enterprise-level SaaS application adoption, waiting for purpose-built APIs for eDiscovery and compliance puts organizations at risk. Solutions combining APIs and Hanzo's Dynamic Capture Technology can bridge the gap with complex data sources for a future-proof approach.